

# HARBOUR ARCH CAPE TOWN



APARTMENTS FOR SALE

# HARBOUR ARCH

A NEW URBAN LIFESTYLE IN THE HEART OF CAPE TOWN

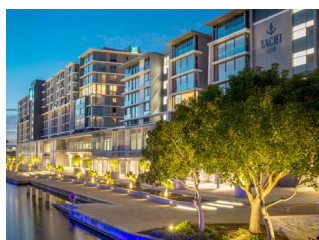
PROUDLY PRESENTED BY:

  
inspiring tomorrow's lifestyles

# ABOUT THE DEVELOPER

Founded in 1989, the Amdec Group is a privately-owned company with an established reputation as South Africa's leading developer of New Urban lifestyles. This reputation, along with the high-profile developments upon which it is based, is founded upon our belief that there is a better way of living, working, relaxing and interacting. Our buildings and public places foster enjoyment, connectivity and a greater sense of well being, while offering energy efficiency, sustainability and convenience.

We are active throughout South Africa, in the United Kingdom, and in the USA. We are proud of our national footprint of iconic developments and our strong real estate brands.



South Africa's favourite mixed-use precinct represents a considerable investment into the creation of a sophisticated 21st century environment, with its pedestrian friendly New Urban design. It is characterised by a wonderful combination of public and private spaces, offering residents, tenants and visitors an unparalleled experience.



Val de Vie and Pearl Valley have been ranked South Africa's top residential estates by New World Wealth for a number of consecutive years. Five-star facilities include an equestrian centre and polo pavilion, clubhouse and restaurants, 2 gyms, the Ryk Neethling aquatic centre, and the Jack Nicklaus Signature Golf Course.



Sitari Country Estate, located outside Somerset West in the Western Cape, spans 192 hectares and offers a range of residential apartments, village-style homes, and grand country houses along with an exclusive Curro School and shopping centre adjacent to the estate.



Westbrook Country Estate in Gqeberha is firmly on course to deliver a New Urban vision, the likes of which have never been experienced in the Nelson Mandela Bay area. Westbrook offers a relaxed and convenient lifestyle in a safe, secure suburb, with all the amenities and services for easy living.



The Yacht Club is strategically positioned at the gateway to the V&A Waterfront, Cape Town. It comprises two towers of modern apartments set above a podium of premium grade office space. It is also home to Africa's first AC Hotel by Marriott.



Established in 2008, Evergreen Lifestyle is South Africa's premier retirement brand with a reputation for developing and operating exceptional retirement villages. There are currently seven operating villages in the Western Cape and Gauteng, and a further six villages under construction.





## HARBOUR ARCH CAPE TOWN

AN ICONIC DEVELOPMENT BY

# THE AMDEC GROUP

Harbour Arch is a development by the Amdec Group, recognised as South Africa's leading developer of New Urban lifestyles. Harbour Arch will be developed using the same mixed-use principles and expertise that were successfully applied at the Amdec Group's iconic and multi award-winning Melrose Arch precinct in the northern suburbs of Johannesburg. On completion, the 5.8 hectare Harbour Arch development will be home to six individual tower blocks with a total 200 000 square meters of usable space, making it the first and largest mixed-use development of its kind in the Cape Town CBD.





## HARBOUR ARCH CAPE TOWN

AN ICONIC NEW GATEWAY TO  
CAPE TOWN

Harbour Arch is strategically positioned at the gateway to Cape Town's vibrant CBD. Its exceptional location will ensure that Harbour Arch is the most visible and easily accessed development in the CBD. Harbour Arch is located at the confluence of the N1 and N2 freeways making it highly visible to anyone arriving in the city. This unrivalled location will also provide quick and easy vehicular access to the Airport, the Southern Suburbs, the Northern Suburbs, the Atlantic Seaboard and the Winelands.





Artist's impression

## HARBOUR ARCH CAPE TOWN

# CAPE TOWN CBD'S FIRST LARGE-SCALE MIXED-USE DEVELOPMENT

Harbour Arch provides a prime opportunity to invest in Cape Town CBD's first large scale inner city mixed-use precinct. Like Melrose Arch, this precinct will encapsulate the principles of new urban living, and present an opportunity for people to live, work, play, relax, and stay in a safe, convenient, enjoyable and sustainable community-focused environment. Enjoying fantastic proximity to the city and its surrounds, Harbour Arch's six towers will be located alongside landscaped public spaces bustling with shops, restaurants, cocktail bars, international hotels, offices, gyms and the largest selection of residential apartments in the CBD.





Artist's impression

## HARBOUR ARCH CAPE TOWN

LIVE A COSMOPOLITAN,  
CONNECTED LIFESTYLE

Link effortlessly to the neighborhood, the city, and the world. Excellent transport connections for vehicles via the N1 and N2 freeways, as well as access to the BRT routes make Harbour Arch easily accessible by car, bus, shuttle, taxi, bike and rail. And within Harbour Arch's vibrant pedestrian-friendly precinct you will find all your daily needs – restaurants, cocktail bars, shopping, hotels, banking, medical services, health clubs, entertainment and so much more.





Artist's impression

## HARBOUR ARCH CAPE TOWN

A SUSTAINABLE &  
INNOVATIVE LIFESTYLE

Harbour Arch will become Cape Town's largest and most ambitious sustainable mixed-use development. Like Melrose Arch, it will be built on sustainable principles and eco-friendly innovation. Integrated green building initiatives will include refuse recycling, water saving devices and rain water harvesting, a centralised district cooling facility and low-energy LED lighting.





HARBOUR  
ARCH CAPE TOWN

INVEST IN THE  
PRECINCT OF THE FUTURE

Residential apartments within the Cape Town CBD are constantly in high demand, generating rental returns and capital growth that are amongst the highest in the country. Invest in the ever-expanding Cape Town foreshore and enjoy the rising demand for accommodation in the heart of the city.





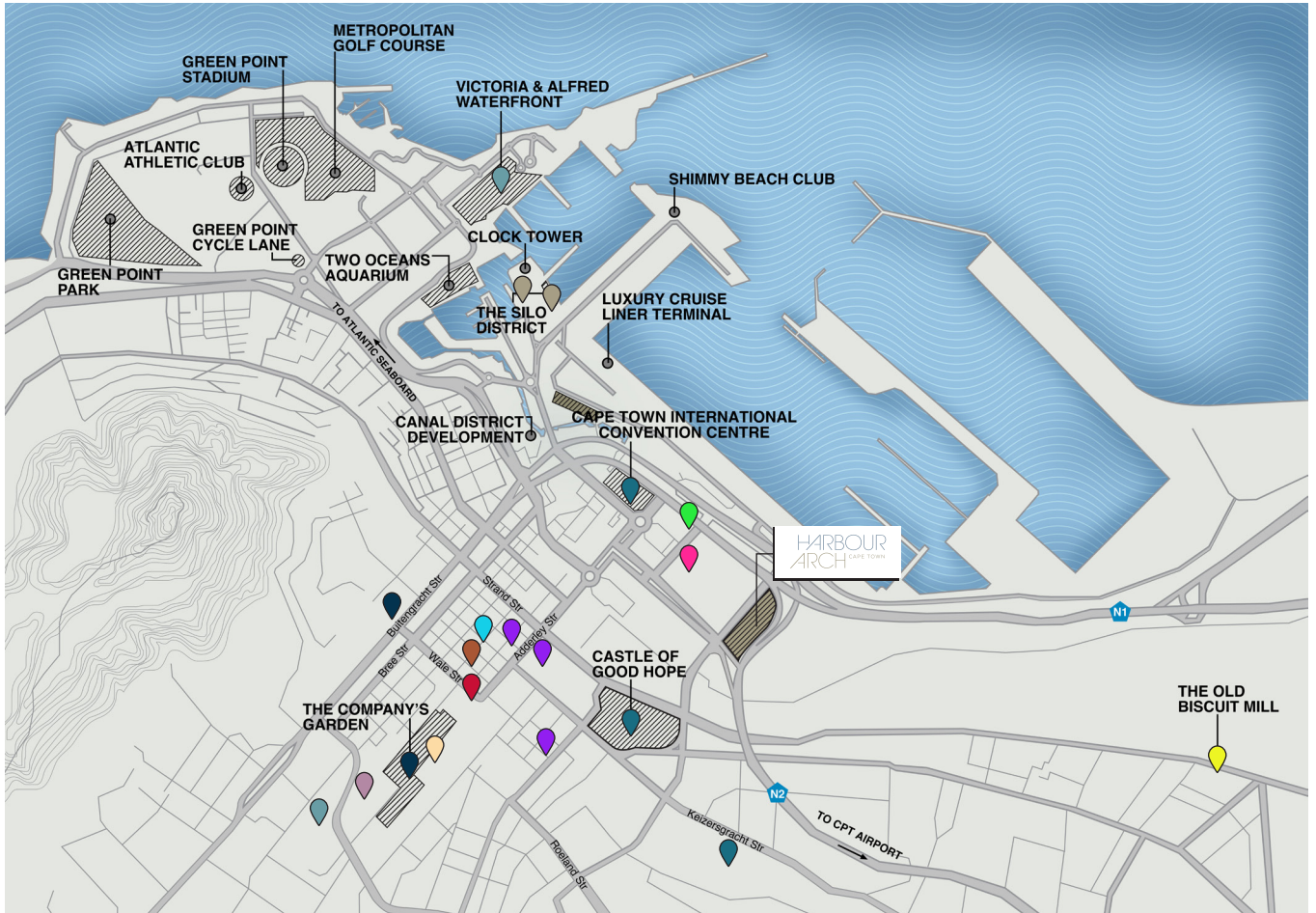
## HARBOUR ARCH CAPE TOWN

### THE ULTIMATE URBAN LIFESTYLE

The first residential tower to be developed within the precinct, No 1 Harbour Arch offers sought-after new urban living, ideal for working professionals, first time buyers, investors, students, and corporate long stay accommodation. A choice of stylish studio, one bedroom, two bedroom and three bedroom corner apartments are available. Each apartment offers fantastic spacial design, modern styling and wonderful upscale finishes.

No 1 Harbour Arch offers its residents a choice of public or private entertainment areas. Select the 8th floor Central Park entertainment area which is open to the general public and residents alike, where you will find a north facing courtyard flanked by retail outlets, restaurants, coffee shops, and cocktail bars. There is also an exclusive heated residents' pool, exercise area, and terrace on the 18th floor.

WELCOME TO  
YOUR NEIGHBORHOOD

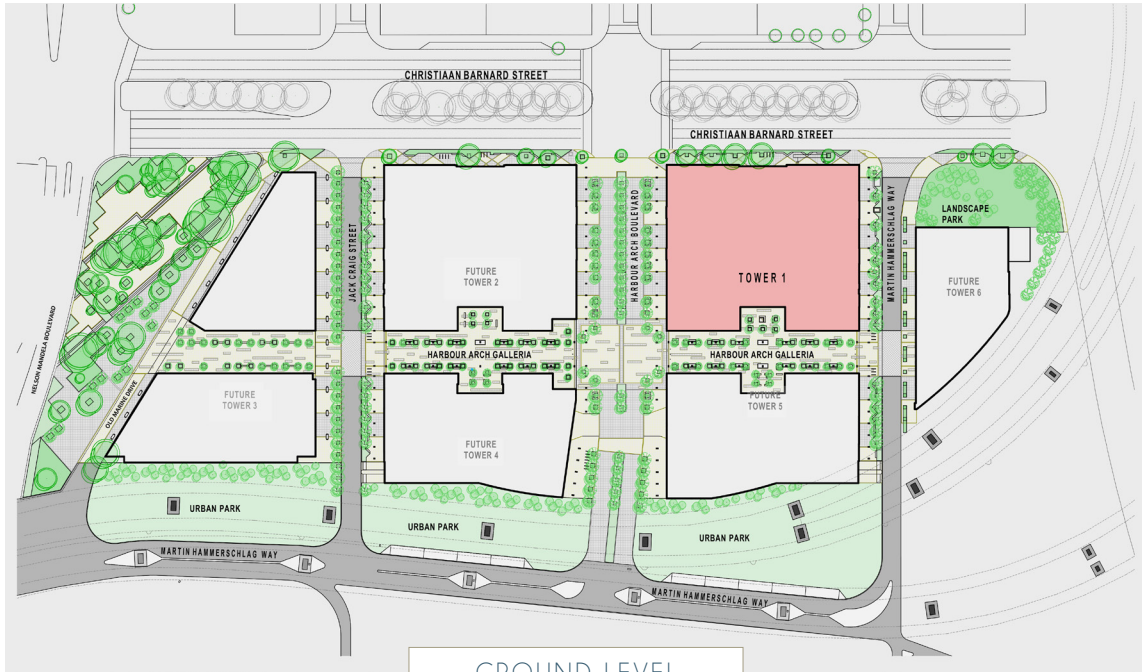


POINTS OF INTEREST

- |       |  |   |       |  |  |       |  |                                 |
|-------|--|---|-------|--|--|-------|--|---------------------------------|
| 450m  |  | Artscape Theatre  | 1.8km |  | Green Market Square                          | 2.4km |  | Bo-Kaap<br>Company Gardens      |
| 650m  |  | Virgin Active Foreshore   | 1.9km |  | St George's Cathedral<br>The Crypt Jazz Club | 2.5km |  | Iziko SA Museum<br>Planetarium  |
| 1.2km |  | Castle of Good Hope<br>CTICC<br>CPUT District Six Campus                | 2km   |  | Long Street                                  | 2.8km |  | V&A Waterfront<br>Labia Theatre |
| 1.5km |  | Adderley Street Flower Market<br>St Georges Mall<br>District Six Museum | 2.2km |  | Silo District<br>Zeitz MOCAA                 | 3.3km |  | Old Biscuit Mill, Woodstock     |
|       |  |   | 2.3km |  | SA National Gallery                          |       |  |                                 |



WELCOME TO  
YOUR PRECINCT



GROUND LEVEL



PODIUM LEVEL



HARBOUR  
ARCH CAPE TOWN

RESIDENTIAL

## APARTMENTS FOR SALE

### STUDIO

1 BED • 1 BATH • PARKING BAY

### 1 BED

1 BATH • PARKING BAY

### 2 BED

2 BATH • PARKING BAY

### 3 BED

3 BATH • PARKING BAY

Brand-new apartments | Move-in ready | Load-shedding-free homes | Breath-taking views

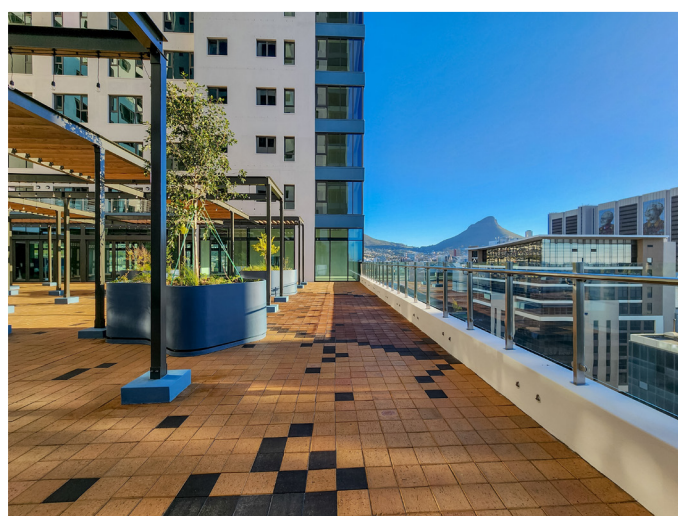


# EXTERIOR PERSPECTIVES





# 8<sup>TH</sup> FLOOR PERSPECTIVES

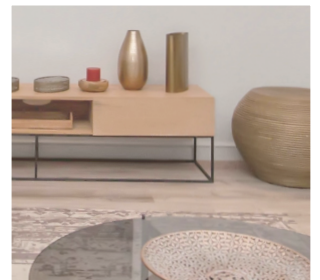
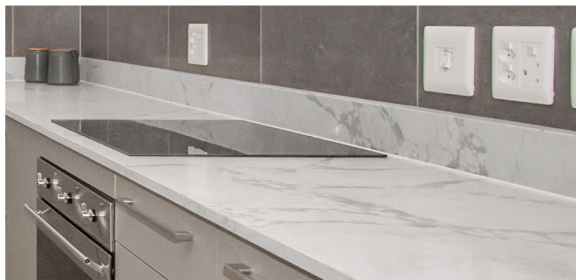




# INTERIOR PERSPECTIVES



METICULOUSLY CONSIDERED  
DESIGNER FINISHES



Apartments at Harbour Arch have been skilfully designed for contemporary modern living, with spacious living areas, open-plan kitchen and dining spaces, and upmarket fixtures and finishes that satisfy the art of luxurious modern living:

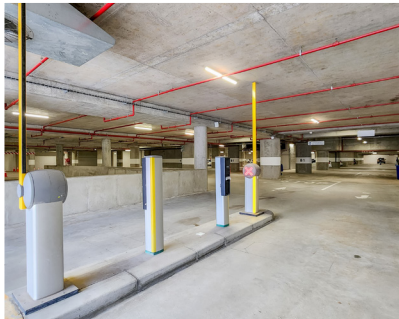
- Black glass SMEG oven and touch control hob
- Semi-integrated stainless steel SMEG extractor fan
- 20mm engineered stone kitchen countertops with matching splashbacks
- Large format matt tiles in bathroom area; vinyl timber flooring in bedrooms
- Energy saving L.E.D lighting throughout
- Open access fibre and DSTV connections
- Backup Power



HARBOUR ARCH

# WORLD-CLASS FACILITIES

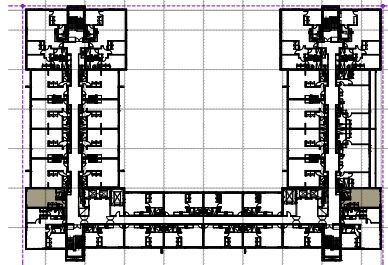
- Resident's heated pool on the 18th Floor
- State-of-the-art security
- Controlled electronic access & CCTV
- Concierge service
- Secure under-cover parking
- Fibre to the home
- L.E.D lighting & energy efficient appliances



UNIT  
TYPE A

STUDIO

SIZE	:	35m <sup>2</sup>
BEDROOM	:	1
BATHROOM	:	1
PARKING BAY	:	1



FLOORS 15<sup>th</sup> - 23<sup>rd</sup>





UNIT TYPE A  
SHOW APARTMENT

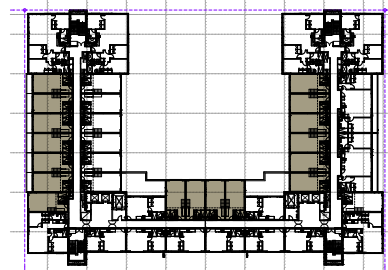


\* PLEASE NOTE: Furniture and appliances are shown for illustrative purposes, and are not included in the apartment specification.

UNIT  
**TYPE A1**  
 ( WITH MEZZANINE )

**STUDIO**

SIZE	:	35m <sup>2</sup>
MEZZANINE	:	10m <sup>2</sup>
BEDROOM	:	1
BATHROOM	:	1
PARKING BAY	:	1



FLOORS 10<sup>th</sup> - 14<sup>th</sup>





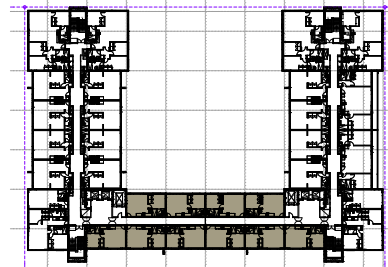
UNIT TYPE A1  
SHOW APARTMENT



UNIT  
TYPE B

1 BED

SIZE	:	41m <sup>2</sup> - 43m <sup>2</sup>
BEDROOM	:	1
BATHROOM	:	1
PARKING BAY	:	1



FLOORS 15<sup>th</sup> - 23<sup>rd</sup>





UNIT TYPE B  
SHOW APARTMENT

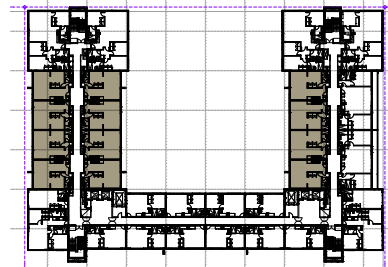


\* PLEASE NOTE: Furniture and appliances are shown for illustrative purposes, and are not included in the apartment specification.

UNIT  
TYPE C

1 BED

SIZE	:	51m <sup>2</sup>
BEDROOM	:	1
BATHROOM	:	1
PARKING BAY	:	1



FLOORS 10<sup>th</sup> - 23<sup>rd</sup>





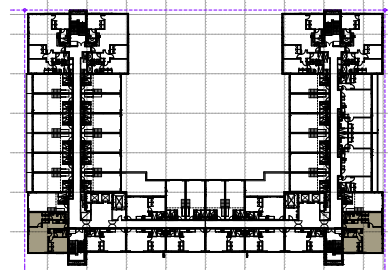
UNIT TYPE C  
SHOW APARTMENT



# UNIT TYPE D

## 2 BED - CORNER

SIZE	:	73m <sup>2</sup>
BEDROOM	:	2
BATHROOM	:	2
PARKING BAY	:	1



FLOORS 10<sup>th</sup> - 23<sup>rd</sup>





UNIT TYPE D  
SHOW APARTMENT

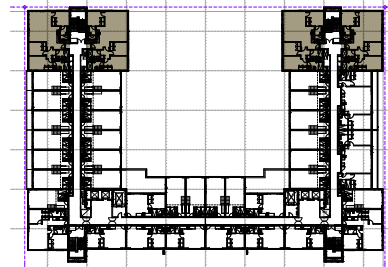


\* PLEASE NOTE: Furniture and appliances are shown for illustrative purposes, and are not included in the apartment specification.

# UNIT TYPE E

## 3 BED - CORNER

SIZE	:	109m <sup>2</sup>
BEDROOM	:	3
BATHROOM	:	3
PARKING BAY	:	1



FLOORS 10<sup>th</sup> - 23<sup>rd</sup>





UNIT TYPE E  
SHOW APARTMENT

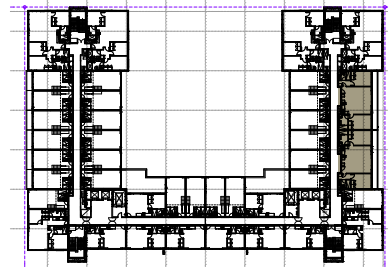


\* PLEASE NOTE: Furniture and appliances are shown for illustrative purposes, and are not included in the apartment specification.

# UNIT TYPE F

## 2 BED

SIZE	:	86m <sup>2</sup>
BEDROOM	:	2
BATHROOM	:	2
PARKING BAY	:	1



FLOORS 10<sup>th</sup> - 23<sup>rd</sup>





UNIT TYPE F  
SHOW APARTMENT



\* PLEASE NOTE: Furniture and appliances are shown for illustrative purposes, and are not included in the apartment specification.

# HARBOUR ARCH CAPE TOWN



# HARBOUR ARCH PROPERTY SALES

**Celeste van Graan**

*Sales & Leasing Manager*

Cell: 087 897 0202 | 082 055 7882

Email: celestev@harbourarch.co.za